



Kita City

Disaster

Preparedness Map



Preparing for a powerful earthquake

The Kita City Disaster Preparedness Map shows the location of evacuation sites and shelters as well as what to do in the event of a powerful earthquake. Please read this document carefully and help us to protect as many people as possible from disasters and reduce the damage to the region.

Keep for future reference

Issued September 2023

Disaster Timeline

When an earthquake occurs

The first major tremor lasts about one minute

● **Firstly, protect yourself**

Protect your head and hide under a table or desk.



1st to 2nd min.

When the shaking subsides, take action

● **Check sources of open flame**

Calmly extinguish stoves, gas cookers, and other fires.

● **Check the safety of your family**

Call out to family members to make sure they are not under furniture that has fallen over.

● **Put on shoes or slippers, and open doors**

Protect your feet from shards of glass and secure an exit.

● **If necessary, evacuate immediately**

If you are concerned about the building collapsing, evacuate immediately.



3rd min.

Check that your neighbors are safe

● **Call out to your neighbors**

Check to see if anyone is injured or needs help.

● **Put out any fires while they are still small**

Cooperate to prevent fires.

● **Do not overexert yourself**

Prevent secondary damage.



5th min.

Obtain correct information

● **Check information on disaster reduction agencies**

Get information from Area Mail and the emergency broadcast system.

● **Turn on the TV and radio**

Check emergency bulletins and other news.

● **Shout to your neighbors**

Tell your neighbors if immediate evacuation is necessary.

● **Where possible, do not use your phone**

Prevent phone lines from becoming congested so they can be used to rescue people.



10th min. to 3rd day

Evacuation and life after evacuation

● **Evacuate by walking and do not use a car**

Enable emergency vehicles smooth passage.

● **Be careful of aftershocks and secondary damage**

Continue to check for disaster information.

● **If you can live at home, use water and food supplies that you have prepared**

Stockpile at least three days' worth of drinking water and food.



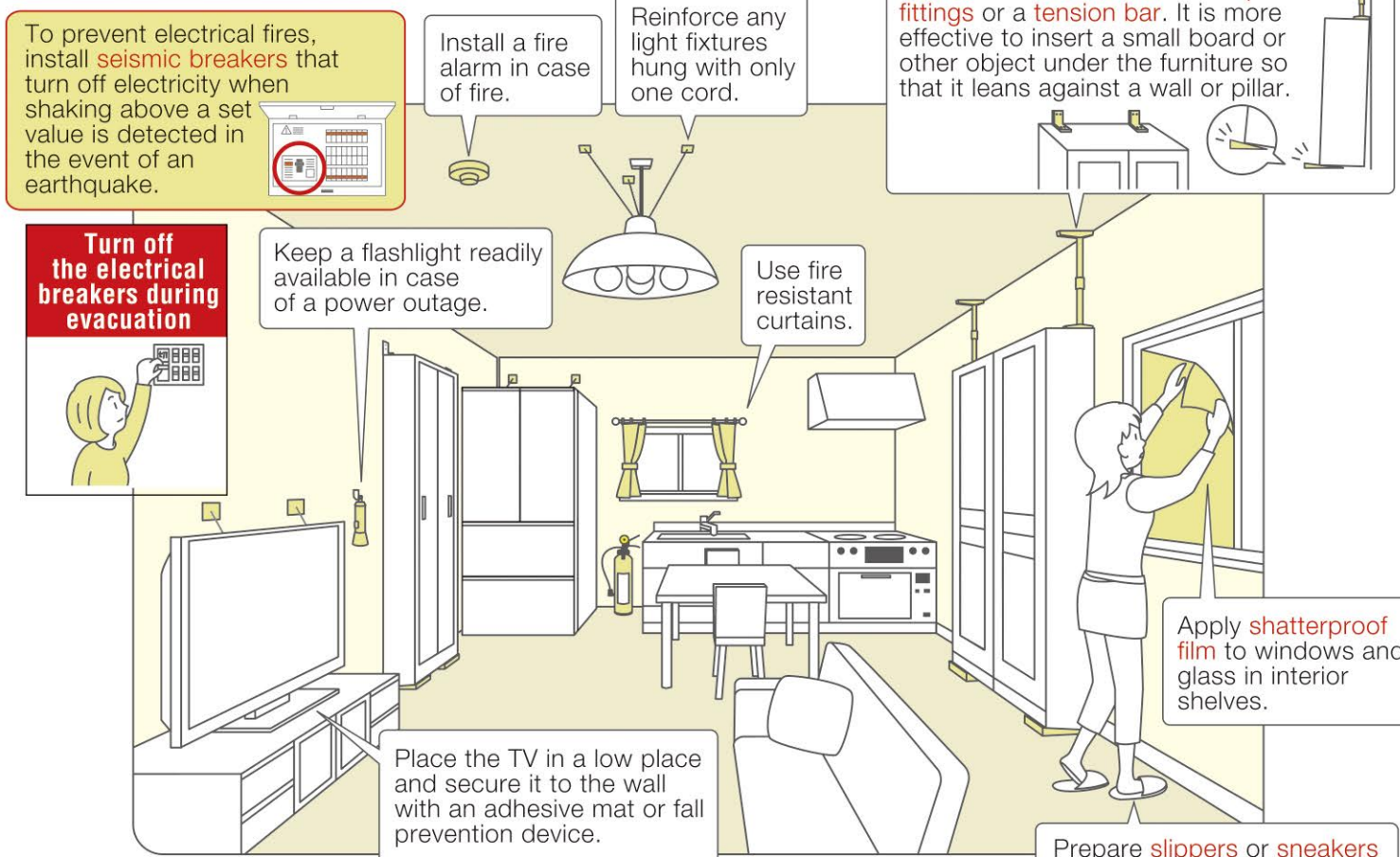
Note : The above timeline is a rough estimate based on past earthquakes. If aftershocks continue or other dangerous conditions persist, protect yourself accordingly.

What to do during an earthquake

If you are at home, hide under a desk or table

Protect your head with a cushion if possible. As soon as the shaking subsides, open doors or windows to secure an exit.

Indoor measures



If you are outside, deal with the situation as it arises

Imagining "What should I do if an earthquake happened here?" will make a difference in your actions in an emergency situation.

Department stores and supermarkets

Move away from display cases and product shelves. Protect your head with your bag. Do not rush to the exit. Obey any instructions from shop staff.

Trains, subways, and buses

Hold on to straps or handrails. When sitting, bend over and protect your head with a bag or other object. Do not leave the train unnecessarily.

While driving a car

Hold on to the steering wheel and gradually slow down. Pull over to the left side of the road. If evacuation is necessary, leave the keys in the car, do not lock the doors, and evacuate on foot (as it may be necessary to move the car to allow emergency vehicles to pass). Take your car registration and other valuables with you.

On the road

Do not stop where you are, protect your head with your bag, and run to a vacant lot, park, or other place where nothing can fall on you. Stay away from block walls and vending machines. Pay special attention to fallen power poles and hanging power lines.

Near the coast

Evacuate to higher ground and listen for tsunami information. Stay away from the coast until warnings and advisories are lifted.



Evacuation and emergency bag

Turn off the main gas valve and electric breaker, and then evacuate with an emergency bag

Before evacuating, be sure to extinguish any fires. Turn off and unplug heating appliances. Turn off the electric breaker as electricity may leak or a fire may occur when the electricity is restored.

Prepare an emergency bag

Prepare items to take with you when evacuating at a weight you can carry. Place it near the front door, in your bedroom, or the trunk of your car so that it can be taken out at a moment's notice.

Emergency items

- Flashlight, Portable radio, Mobile battery, Bank book and personal seal, ID (driver's license/insurance card), Medicine box, Cash

Daily items

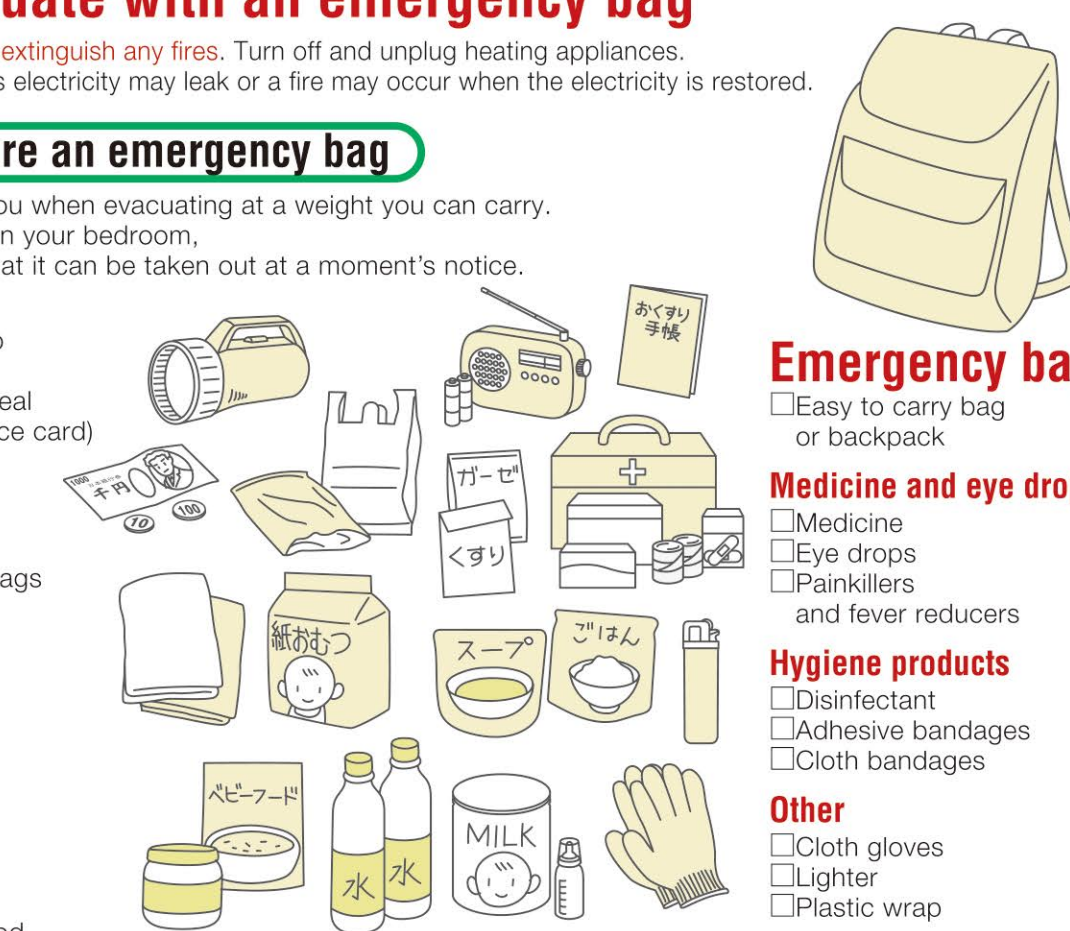
- Tissues and newspaper, Toothbrush kit, Plastic bags, Raincoat, Nappies, Menstrual products, Clothes, Towels

Food

- Dried food, Nutritional supplements, Canned bread and food, Retort pouch

Emergency food

- Powdered milk, Baby food, Drinking water



Emergency bag

- Easy to carry bag or backpack

Medicine and eye drops

- Medicine, Eye drops, Painkillers and fever reducers

Hygiene products

- Disinfectant, Adhesive bandages, Cloth bandages

Other

- Cloth gloves, Lighter, Plastic wrap

Note : The above items are examples. Please prepare anything else you may need in an emergency.

Securing daily items

Stock at least three days of daily items at your home

When an earthquake occurs, electricity, gas, and water supplies may be cut off, and obtaining food and daily necessities may become difficult. Stockpile at least three days' worth and preferably a week's worth of supplies. Below are examples of items you should stockpile. Moreover, we recommend daily stockpiling (rolling stock), in which you prepare a little more of the food and daily necessities that you normally use on a daily basis.

Stockpile list

Food

- Staple foods (dried noodles, long life rice), Main dishes (retort food, canned food), Drinking water (3 L per person per day), Confectionery (chocolate, etc)

Daily items

- Trash bags and large plastic bags, Plastic wrap, Toilet paper and tissues, Wet wipes, Menstrual products, Disposable hand warmers, Lighter

Items only for those that need them

- Powdered milk, Baby food, Nappies, Baby wipes, Pet supplies

Preparing for a disaster

- Emergency toilet (7 to 8 times per day per person), Rubber gloves, Flashlight, Portable radio, Mobile battery, Portable gas stove, Gas canister

List of contacts

Main facilities of Kita City

Name	Telephone number	Address
Kita City Office	3908-1111 (Representative Number)	1-15-22, Oji-honcho
Disaster Prevention Center	3940-1811 (Representative Number)	2-1-6, Nishigahara

Life line

Note : You can call from a cell phone, but not an IP phone.

Name & Telephone number
Customer Call Center, Bureau of Waterworks, Tokyo Metropolitan Government 5326-1101
Customer Service Section, Tokyo Metropolitan Bureau of Sewage Western Area No.2 Office 3969-2343 or 3969-6490(Kita Branch Office)
NTT East Japan, South Kanto 0120-444-113(Toll-free dial)
TEPCO Energy Partner 0120-995-006(Toll-free dial)
Tokyo Gas Customer Call Center 3344-9100

Police & Fire Stations

Name	Telephone number	Address
Oji Police Station	3911-0110 (Representative Number)	3-22-22, Oji
Akabane Police Station	3903-0110 (Representative Number)	3-10-1, Kamiya
Takinogawa Police Station	3940-0110 (Representative Number)	2-4-1, Nishigahara
Oji Fire Station	3927-0119 (Representative Number)	4-28-1, Oji
Akabane Fire Station	3902-0119 (Representative Number)	1-10-4, Akabane-minami
Takinogawa Fire Station	3916-0119 (Representative Number)	2-1-1, Nishigahara

Name & Telephone number
Customer Service Section, Tokyo Metropolitan Bureau of Sewage Western Area No.2 Office 3969-2343 or 3969-6490(Kita Branch Office)
NTT East Japan, South Kanto 0120-444-113(Toll-free dial)
TEPCO Energy Partner 0120-995-006(Toll-free dial)
Tokyo Gas Customer Call Center 3344-9100

What if I cannot contact my family during a disaster?

Disaster Message Number 171

During a disaster, phone lines may be busy and it may be difficult to contact family members. In that case, dial "171" and follow the instructions to record and/or play messages.

Note 1 : You can call from a landline, public phone, and a cell phone. Note 2 : Service availability is determined by NTT and announced via TV and radio.

How to record a message

1 7 1

You will hear instructions.

1

Landline number*1 in the disaster area or cell phone number

You must enter the area code for a landline.

*1 If the landline number that you want to contact is not in an area designated as a disaster area, you will not be able to use the service. This service is available to cell phones regardless of the area.

Trial use dates

1st and 15th of every month from 0:00 to 24:00 First three days of New Year (0:00 Jan. 1 to 24:00 Jan. 3) Disaster Prevention Week (09:00 Aug. 30 to 17:00 Sept. 5) Disaster Prevention and Volunteer Week (09:00 Jan. 15 to 17:00 Jan. 21)

Disaster message board e.g., Web171

This message board allows users to register and check messages using a cell phone, smartphone, and computer in the event of a major disaster.

NTT East Japan https://www.web171.jp/

NTTdocomo http://dengon.docomo.ne.jp/top.cgi

au (KDDI) http://dengon.ezweb.ne.jp/

SoftBank http://dengon.softbank.ne.jp/

How to register your status

Please follow the voice menu for each website to register your status.

1 Select "Disaster Message Board" displayed in the menu

2 Select "Register"

3 Select a status such as "I am safe," and enter a comment of up to 100 letters

4 Click "Register" to post comment

How to check status

Please follow the voice menu for each website to check someone's status.

1 Select "Disaster Message Board" displayed in the menu

2 Select "Check"

3 Enter the cell phone number of the person for whom you want to check their safety

4 Click "Search" to check their status

Kita City e-mail newsletter

Receive evacuation instructions issued by the City, and disaster preparedness, weather, and other information via e-mail. Please register as part of your disaster preparedness plan.

Please register your e-mail address

Registration procedure

1. Scan the 2D barcode for registration with your cell phone, or access the registration site from the URL in (1) or (2) and send a blank e-mail.

(1) For computers and smartphones:

https://plus.sugumail.com/usr/kita-city/home

(2) For feature phones:

https://m.sugumail.com/m/kita-city/home

2. You will receive a link for registration. Click this link.

3. Select the distribution category, enter your registration information, and then click "Go to confirmation screen".

4. Review the entered information and then click the register button.

Registration is complete when the registration complete screen appears.

Type of information	Description
Emergency information	Emergency information on major accidents and disasters, and information on evacuation.
Weather advisories / warnings	Announcements and cancellations of advisories and warnings for heavy rain, floods, and such like from the Japan Meteorological Agency.

Note 1 : There is no registration fee for the e-mail newsletter, but you are responsible for the telecommunication equipment and any communication fees incurred to receive the newsletter.

Note 2 : The Kita City e-mail newsletter is a service that combines the existing Disaster Preparedness and Weather Information and City Resident Information e-mails.

Note 3 : You can also register for information distributed in the City Resident Information e-mail, such as safety and security information, information on events in the City, and childcare support information.

Emergency broadcast system

Evacuation instructions, J-alerts, and information on disasters will be broadcast from the emergency broadcast system speakers in the City. If you have difficulty hearing the speakers, you can use the "Automated Telephone Answering Service" to confirm the details.

0120-061-724

Note : It may be difficult to get through when many people call the number at the same time. Please wait a few moments and try again.

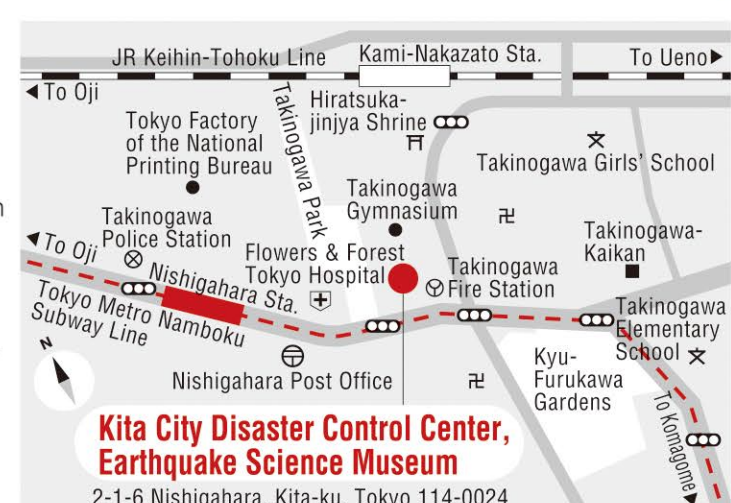
Learn more about earthquakes

Kita City Disaster Control Center, Earthquake Science Museum

This center was established in 1984 to provide many people with knowledge about disaster preparedness through exhibits and interactive experiences. The exhibition room shows the mechanism of earthquakes. There are also interactive facilities such as a room that simulates an earthquake with a seismic intensity of 7 and a smoke simulation room that simulates a fire.

Opening hours 9:00 am to 5:00 pm Admission Free of charge Closed Every Monday (open if it is a national holiday, closed the next day), national holidays (but open if it is a Saturday), and Year-end and New Year's holidays

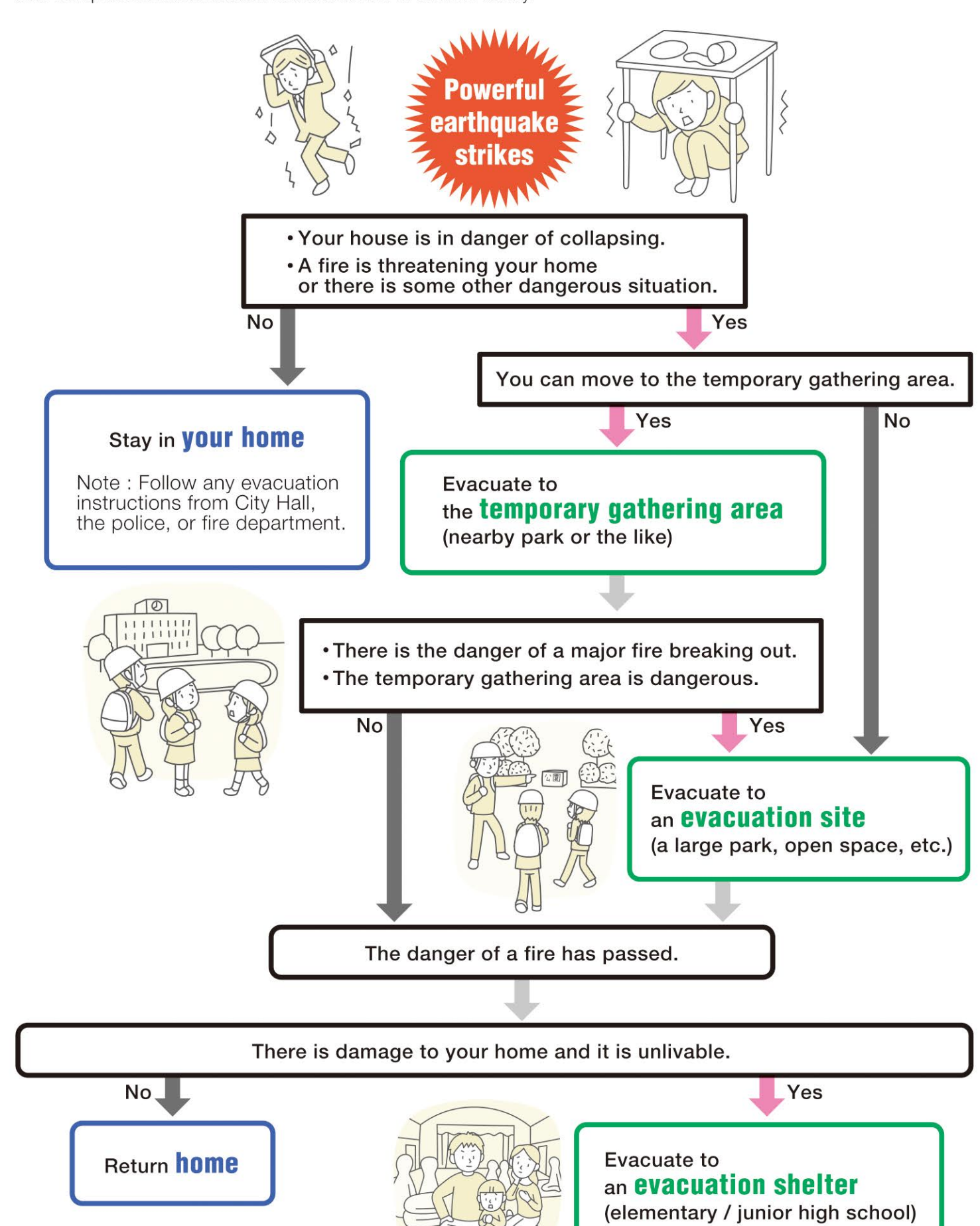
Telephone number 03-3940-1811 (Representative Number)



Note : For groups, please call in advance to make a reservation. The center will be happy to discuss the details of a tour, interactive experience, and drills.

Basic evacuation flow in Kita City

Depending on the scale of the disaster and the situation, evacuation procedures may change, but the basic approach to evacuation in the City is shown below. Consult your family, local government, and workplace about evacuation sites and how to confirm safety.



Risk levels in Kita City (community risk assessment study)

In accordance with the Tokyo Metropolitan Government Ordinance on Earthquake Disasters Countermeasures, the Tokyo Metropolitan Government conducts a "Community Earthquake Risk Assessment Study" approximately every five years, the ninth of which was published in 2023. In this assessment study, the earthquake risk in each of the 5,177 urbanized areas in Tokyo was evaluated relatively by dividing each risk into five ranks, taking into account the degree of difficulty of disaster operations in addition to the collapse of buildings and fires caused by earthquakes.



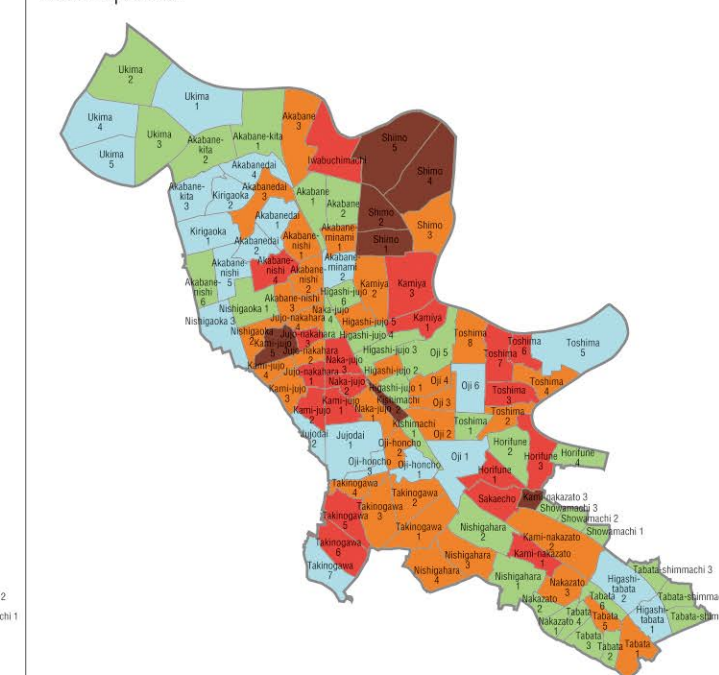
Building collapse risk

It is an assessment of the degree of risk of a building collapsing or leaning due to the shaking from an earthquake.



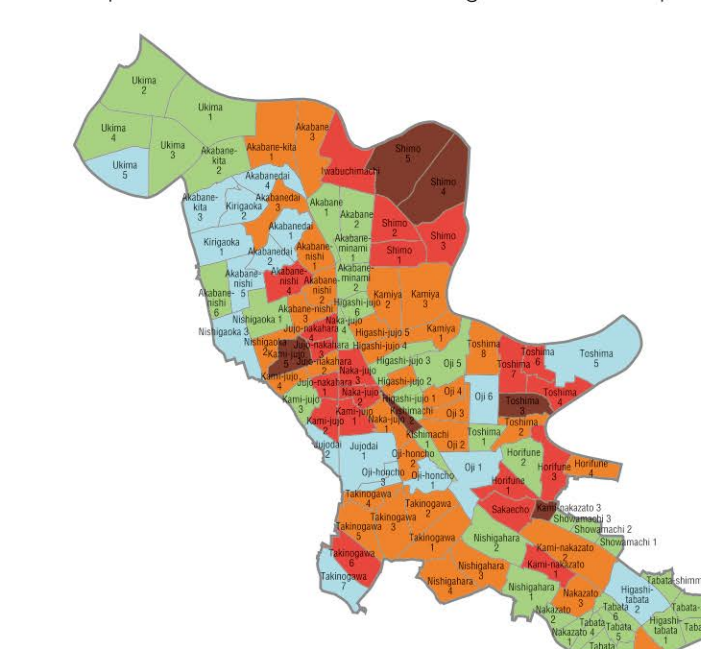
Fire risk

It assesses the degree of risk of damage to a large area due to the spread of fire caused by the shaking from an earthquake.



Total risk

In order to show the earthquake risk of your area in an easy-to-understand manner, this index is compiled by taking into account the degree of difficulty of activities during a disaster in addition to the risk of building collapse and fire due to the shaking from an earthquake.



Difficulty coefficient for disaster activity

The ease (difficulty) of evacuation from hazardous areas, firefighting, rescue, and other disaster activities in the event of building collapse or fire caused by an earthquake is measured based on the state of the road infrastructure, such as the width of the road network and the number of wide roads.

Difficulty coefficient for disaster activity

0.4 - High difficulty

0.3 - 0.4

0.2 - 0.3

0.1 - 0.2

0.0 - 0.1 Low difficulty

